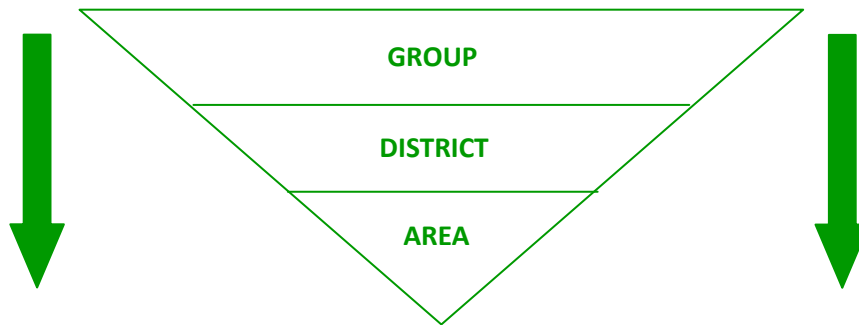
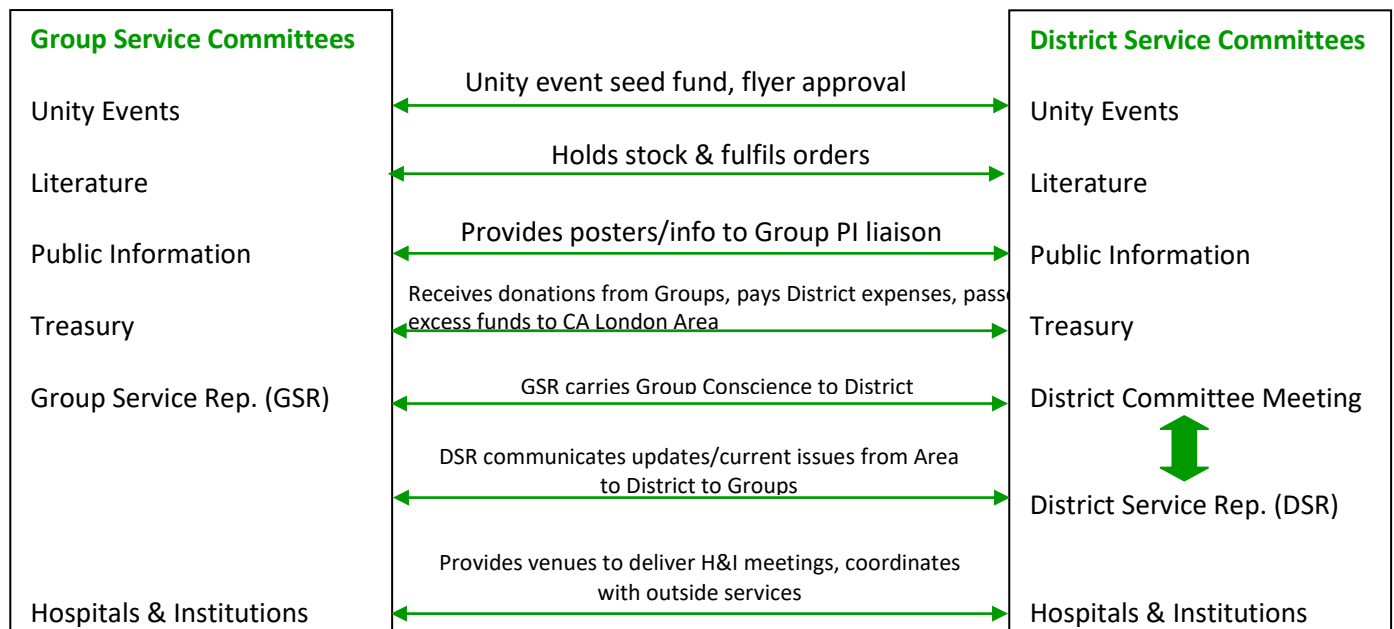


## Group & District Relationship



A District has the primary function of the unification of its Groups by keeping in frequent contact with them, learning their problems and sharing ways to contribute to their growth and wellbeing. The most important function is to serve the needs of the local Groups. This is commonly done by providing services such as fulfilling literature orders, collecting treasury donations, raising awareness of fellowship events, providing Public Information (PI) and Hospitals & Institutions (H&I) support. In addition, a District can provide guidance to Groups on a range of fellowship related matters or queries.



### District Service Representative (DSR)

Each District can have one DSR for every ten (10) groups in the District. The District Service Representative (DSR) is the essential link between the groups' GSR and the Area (CA London). CA London currently has 4 Districts: East London (ELD), South Central, West London, North London.

Each District meets monthly to discuss Group & District Business. The GSR carries its Group's conscience to the monthly District Meeting. Likewise, a DSR carries its District's conscience to the monthly Area meeting.